



David Nolan Gallery
Art Basel Miami Beach 2019
Booth B07

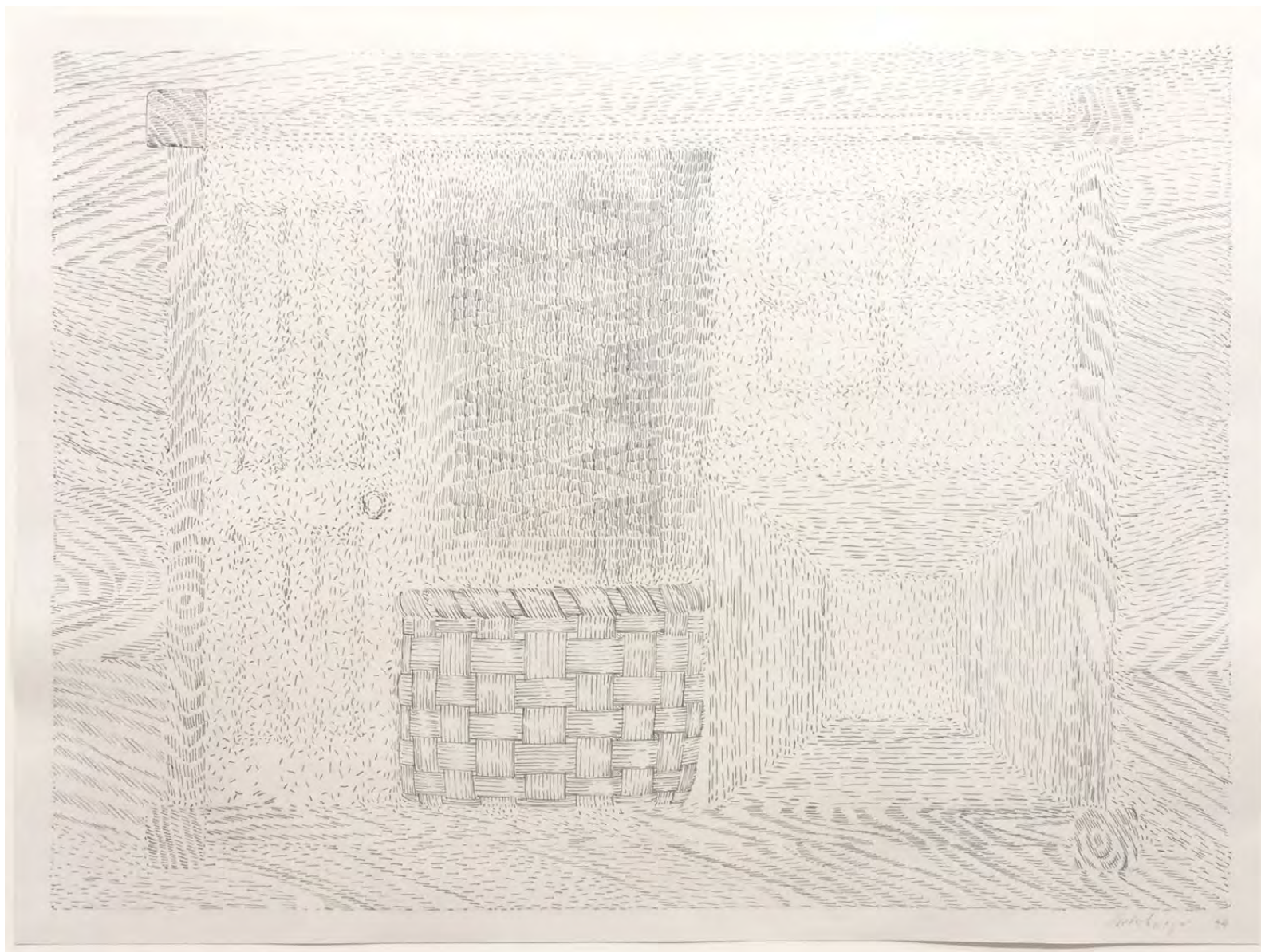
Richard Artschwager
Julia Fish
Neil Gall
George Grosz
David Hartt
Mel Kendrick
Barry Le Va
Jonathan Meese
Wardell Milan
Ciprian Muresan
Jim Nutt
Jorinde Voigt

Additional works available by:
Franz Ackermann
William Copley
Carroll Dunham
Mona Hatoum
Adam McEwen
Albert Oehlen
Gabriel Orozco
Peter Saul
Franz West
Rachael Whiteread

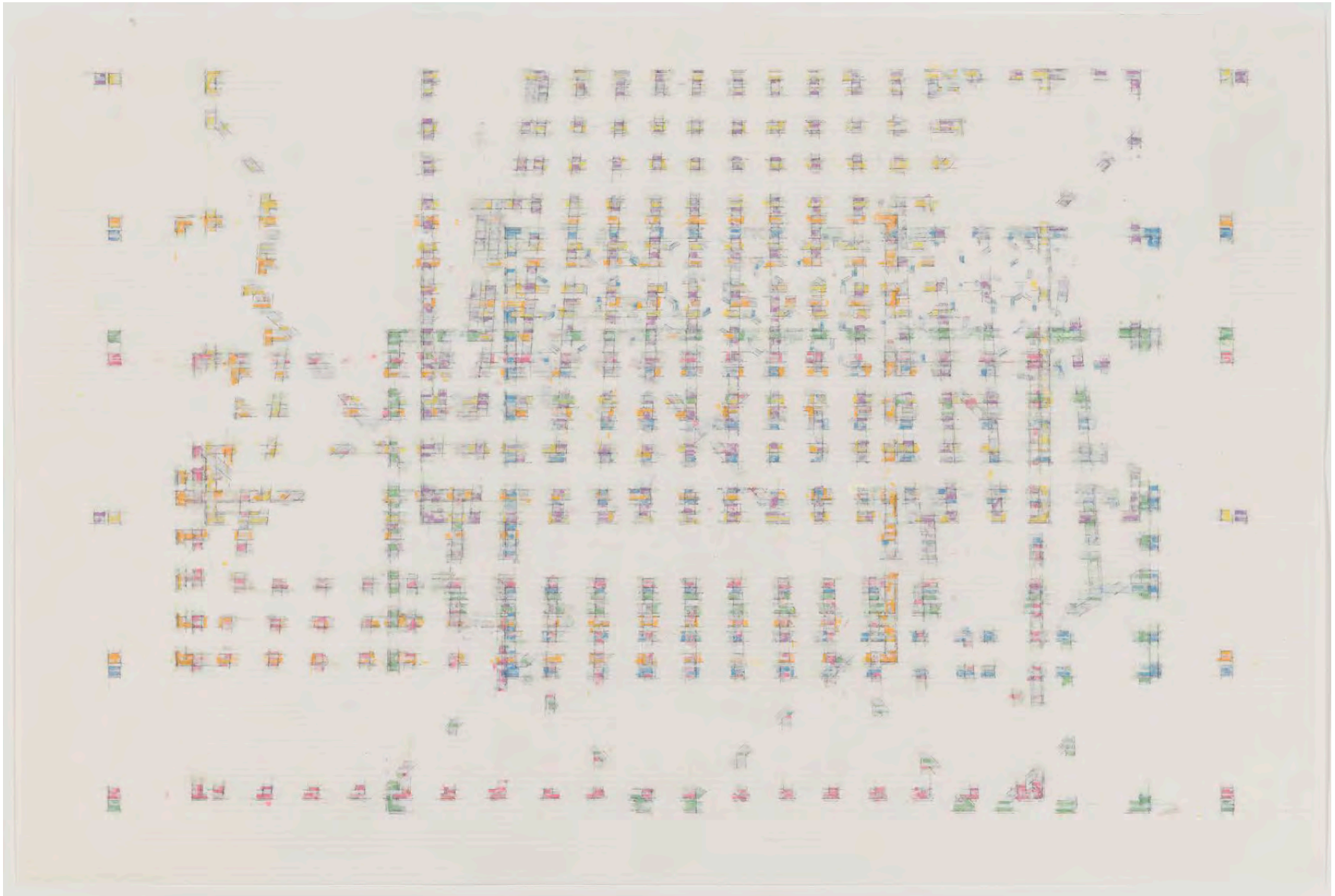
December 5-8, 2019
Preview: Wednesday, December 4

DAVID NOLAN NEW YORK

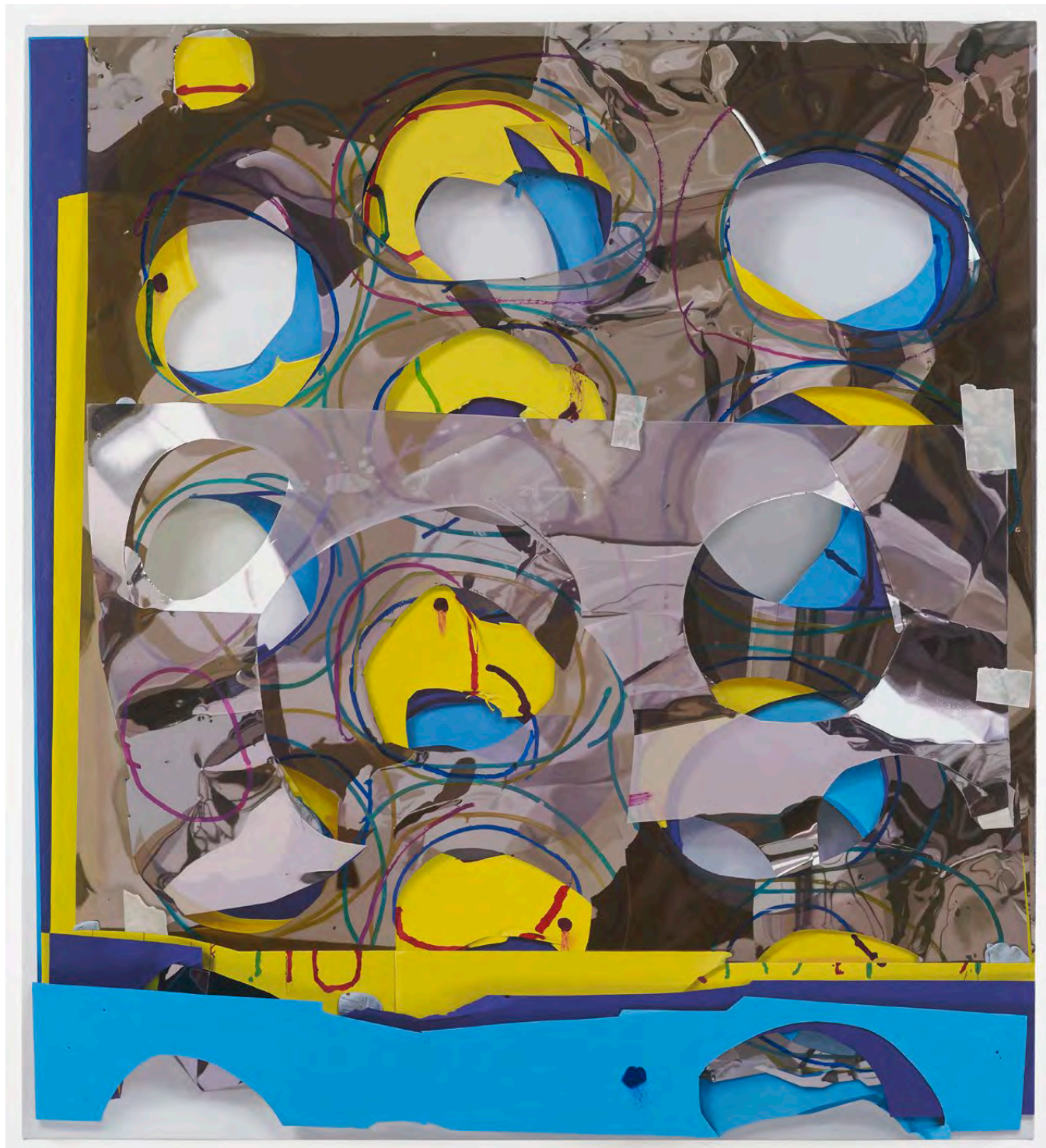
527 West 29th Street New York NY 10001 Tel 212 925 6190
info@davidnolangallery.com davidnolangallery.com



RICHARD ARTSCHWAGER
Door Window Table Basket Mirror Rug #34, 1974
graphite and ink on paper
19 1/2 x 26 in (49.5 x 66 cm)
framed: 20 x 27 in (50.8 x 68.6 cm)
(RA7232)



JULIA FISH
Study for Threshold — Matrix : fossil [spectrum : sample], 2015, 2016
ink on UV paper
23 x 35 in (58.4 x 88.9 cm)
(JF5692)



NEIL GALL
Modern Craft, 2019
oil on canvas
63 1/8 x 57 1/8 in (160.2 x 145 cm)
(NG7309)





GEORGE GROSZ
Downtown Manhattan, 1933
watercolor on paper
24 5/8 x 19 1/8 in (62.5 x 48.4 cm)
(GG7084)



DAVID HARTT

Ebony Fashion Fair Archive at The Johnson Publishing Company Headquarters, Chicago, Illinois I, 2011

archival pigment print mounted to Dibond and framed

30 x 40 in (76.2 x 101.6 cm)

Edition of 6

(DH7204)



DAVID HARTT

Test Kitchen at The Johnson Publishing Company Headquarters, Chicago, Illinois II, 2011

archival pigment print mounted to Dibond and framed

30 x 40 in (76.2 x 101.6 cm)

Edition of 6

[DH5822]



MEL KENDRICK

Untitled, 2019

bronze with red Japan color

48 x 39 x 4 1/2 in (121.9 x 99.1 x 11.4 cm)

Edition of 3 cast bronzes, each uniquely treated
(KEN6013)





BARRY LE VA

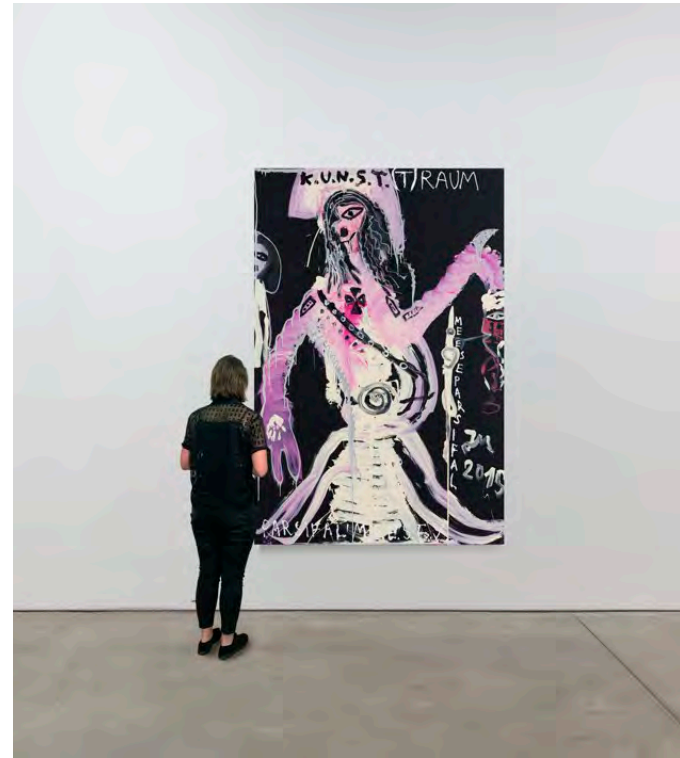
Installation Study - Expanding Foundations: Eliminating Foundations, 1979

acrylic, enamel, wax crayon and transfer paper collage on paper

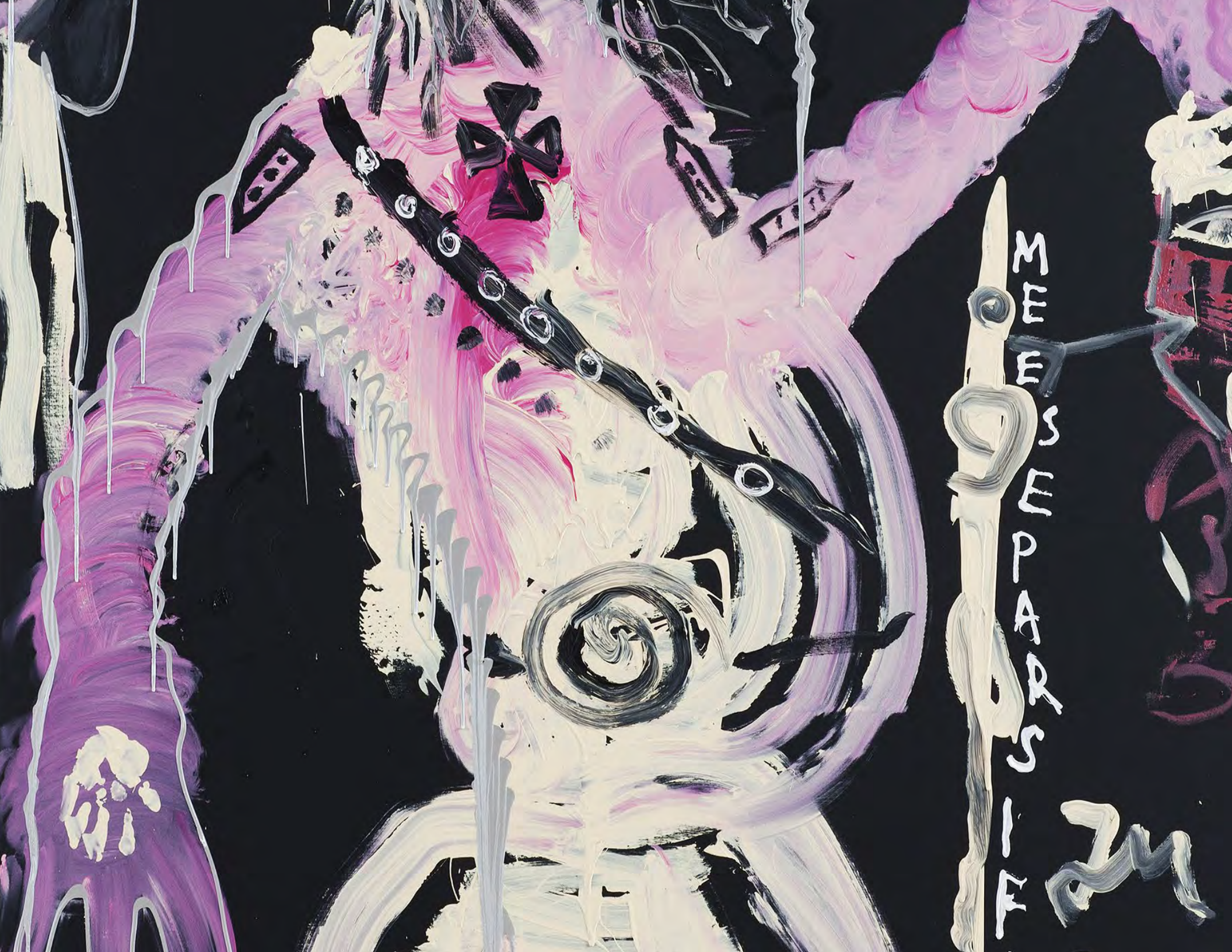
sheet: 74 3/4 x 52 in (189.9 x 132.1 cm)

framed: 75 x 52 3/8 in (190.5 x 133 cm)

(BL7313)



JONATHAN MEESE
DER LIEBEVOLLSTE KUNSTDIKTATOR "K.U.N.S.T." "ENTKULTTOUR"
ALLE(S), WIE S.A.U., RATZFATZT..., 2015
acrylic and mixed media on canvas
106 3/8 x 71 in (270.3 x 180.2 cm)
(JM7302)



MEMBERSHIP
[Signature]



JONATHAN MEESE
DIE INSEL DER GRUSELIGEN FRUCHT, 2017
acrylic and acrylic gel on canvas
39 9/16 x 31 5/8 x 1 5/16 in (100.5 x 80.3 x 3.3 cm)
[JM6534]



WARDELL MILAN

Aggression is as much a form of display and performance as narcissism., 2008

digital C-print

framed: 43 x 53 in (109.2 x 134.6 cm)

Edition of 4

(WM7395)



WARDELL MILAN

I am not cray, life is.

from the portfolio: *The Balcony*, 2019

series of 8 etchings on paper

plate: 10 1/4 x 13 in [26 x 33 cm]

sheet: 15 3/4 x 19 3/4 in [40 x 50 cm]

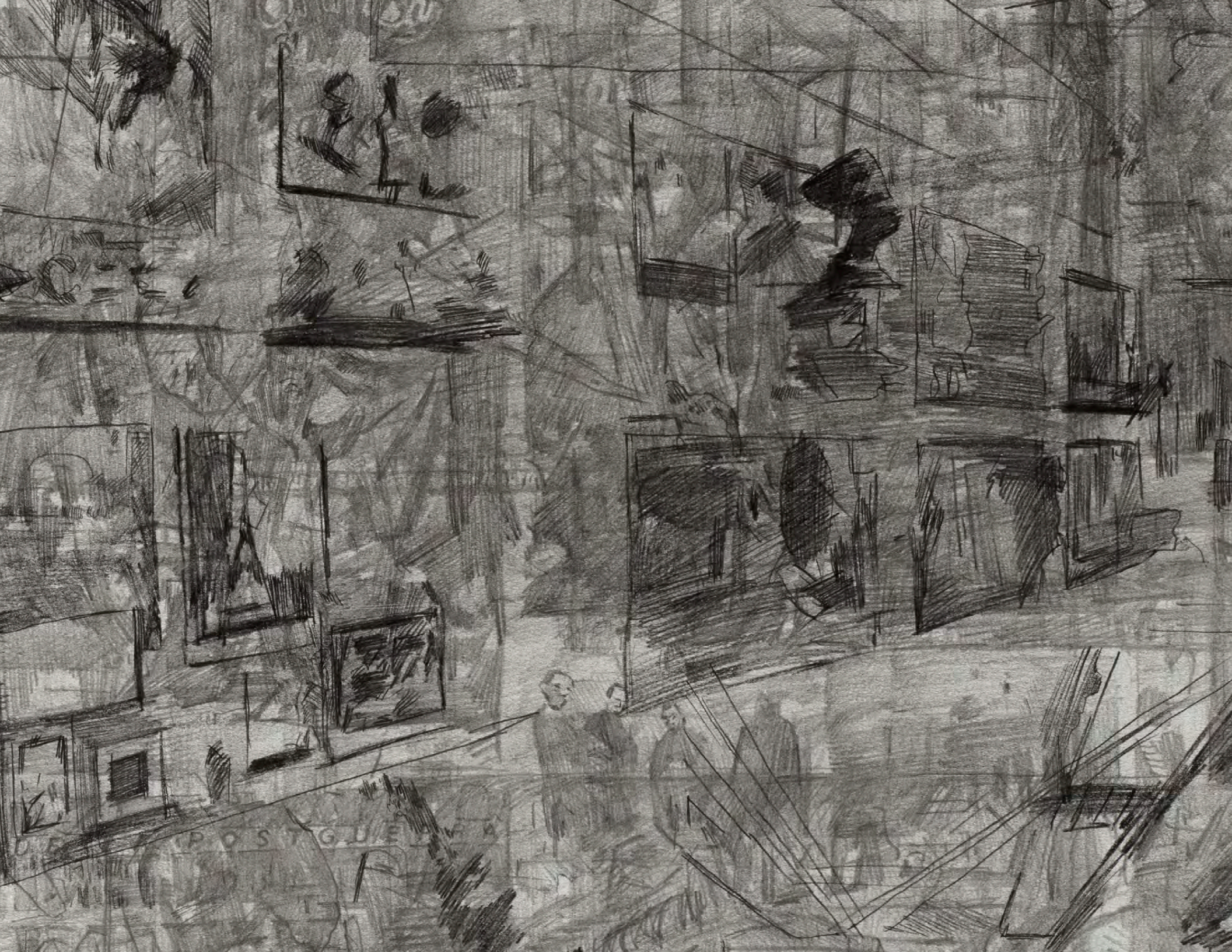
Edition of 12

(WM7426)



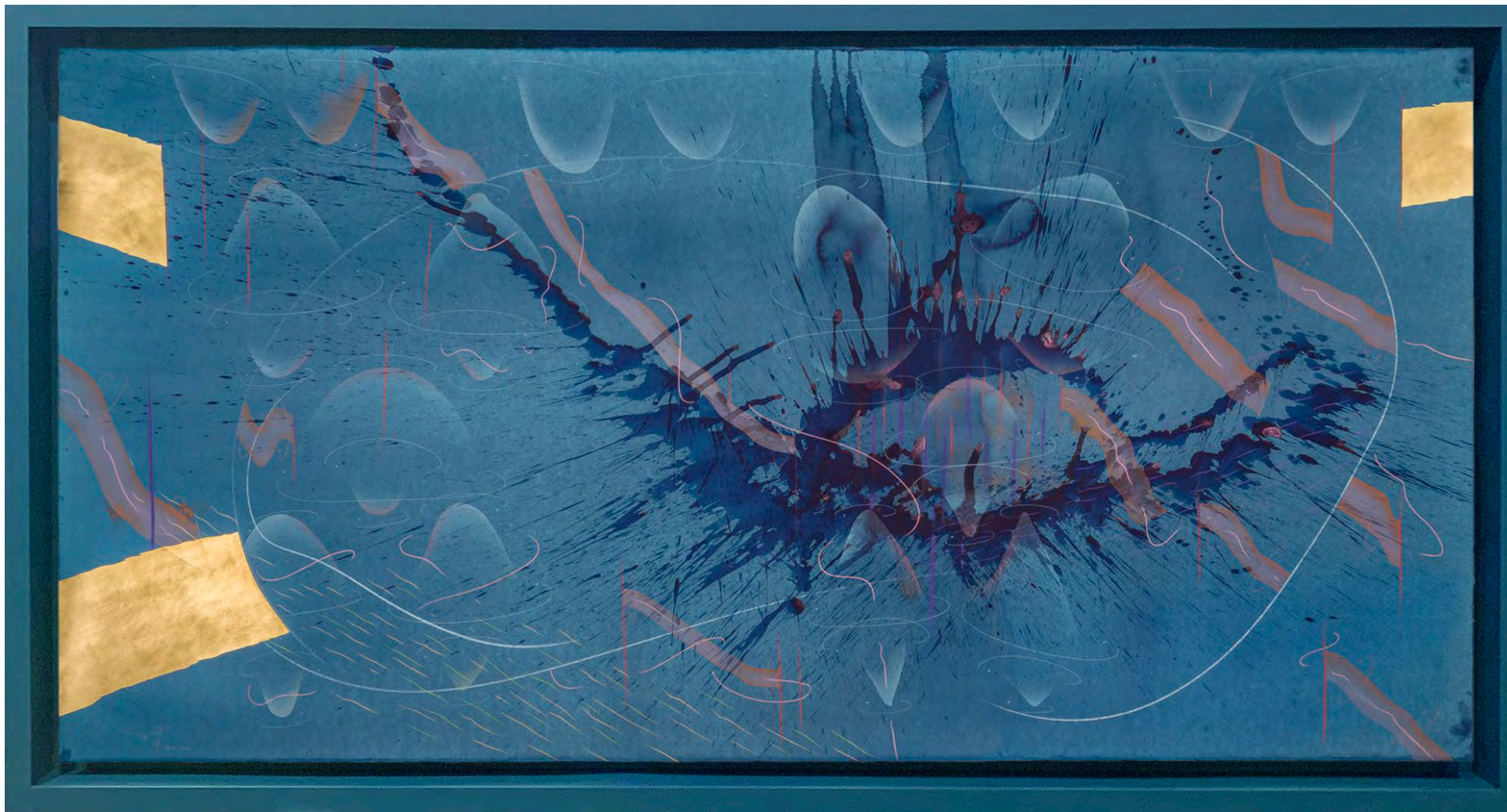
CIPRIAN MURESAN

All Images from a December 2016 issue of Afterall magazine, 2017
graphite on paper
29 3/4 x 20 13/16 in (75.6 x 52.9 cm)
(CM6341)





JIM NUTT
SMack SMack, 1968-69
lithograph on paper
image: 14 1/4 x 10 3/4 in (36.2 x 27.3 cm)
sheet: 22 1/4 x 15 in (56.5 x 38.1 cm)
Edition of 20
(NUTT0122)



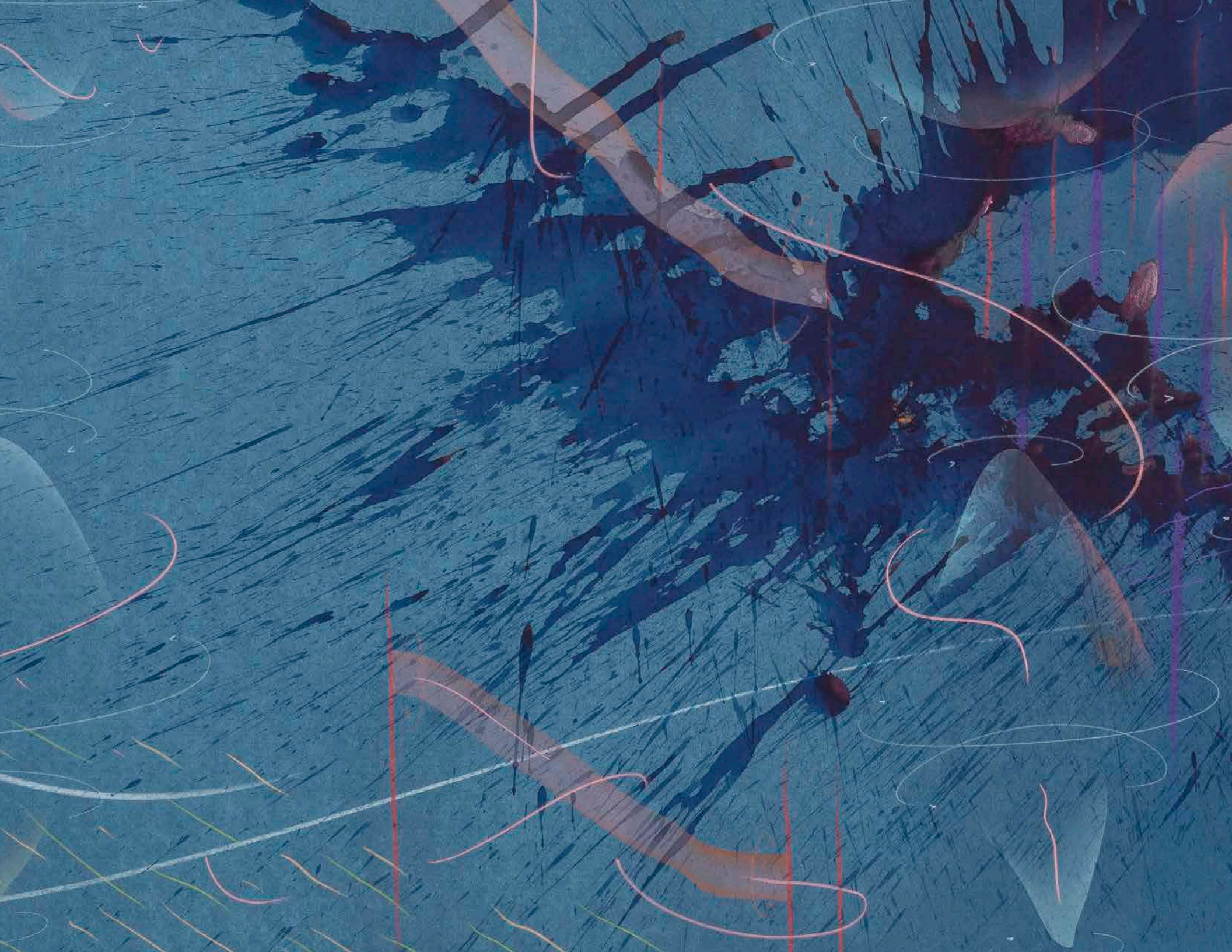
JORINDE VOIGT

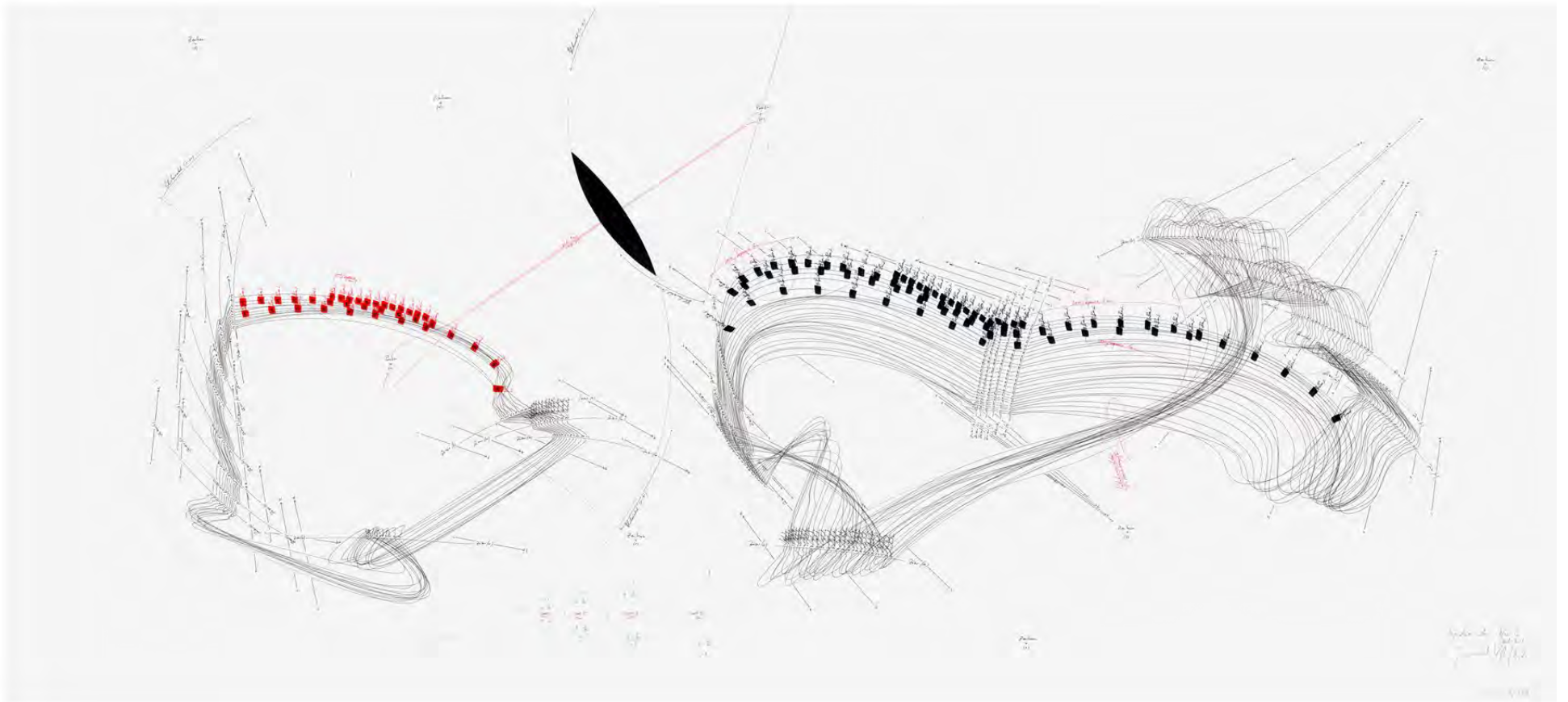
Immersive Integral The Real Extent II, 2019

India ink, gold leaf, pastel, oil pastel, and graphite on paper in artist designed frame

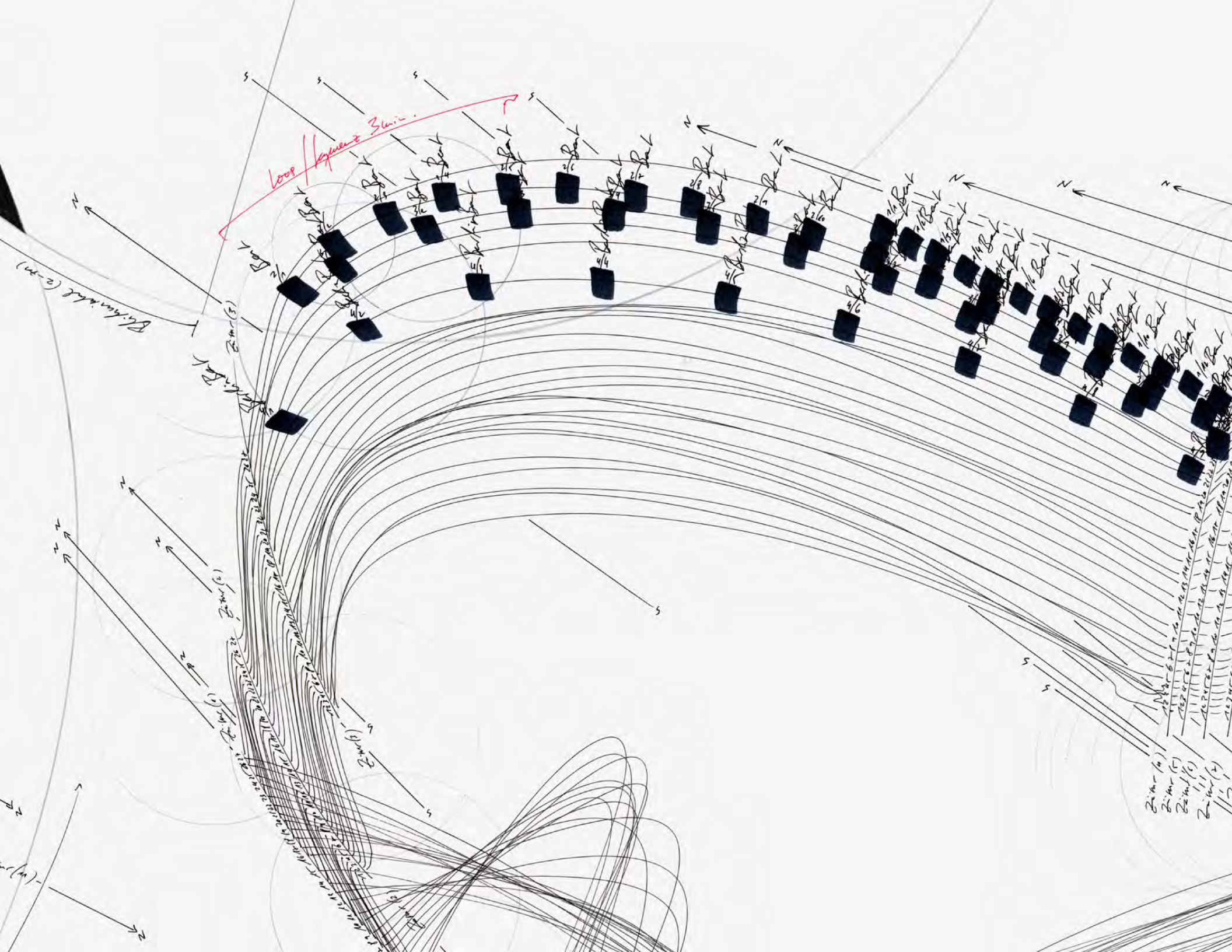
55 3/8 x 109 1/2 in (140.8 x 278.2 cm)

[JV7310]





JORINDE VOIGT
Symphonic Area Var. 12, 2009
ink and pencil on paper
31 1/2 x 70 7/8 in (80 x 180 cm)
(JV3073)





Additional works available by:

Franz Ackermann

William Copley

Carroll Dunham

Mona Hatoum

Adam McEwen

Jim Nutt

Albert Oehlen

Gabriel Orozco

Peter Saul

Franz West

Rachael Whiteread

PETER SAUL

Chinese Businessman Lands on Wall Street, 2006
(detail)



FRANZ ACKERMANN
Untitled (Mental Map: Dangerous Exit), 1999
gouache, acrylic and graphite on paper
5 1/8 x 7 1/2 in (13 x 19 cm)
framed: 10 1/2 x 12 3/4 in (26.7 x 32.4 cm)
(FA7415)



FRANZ ACKERMANN

Some miles under the ground, 2003

graphite and gouache on paper

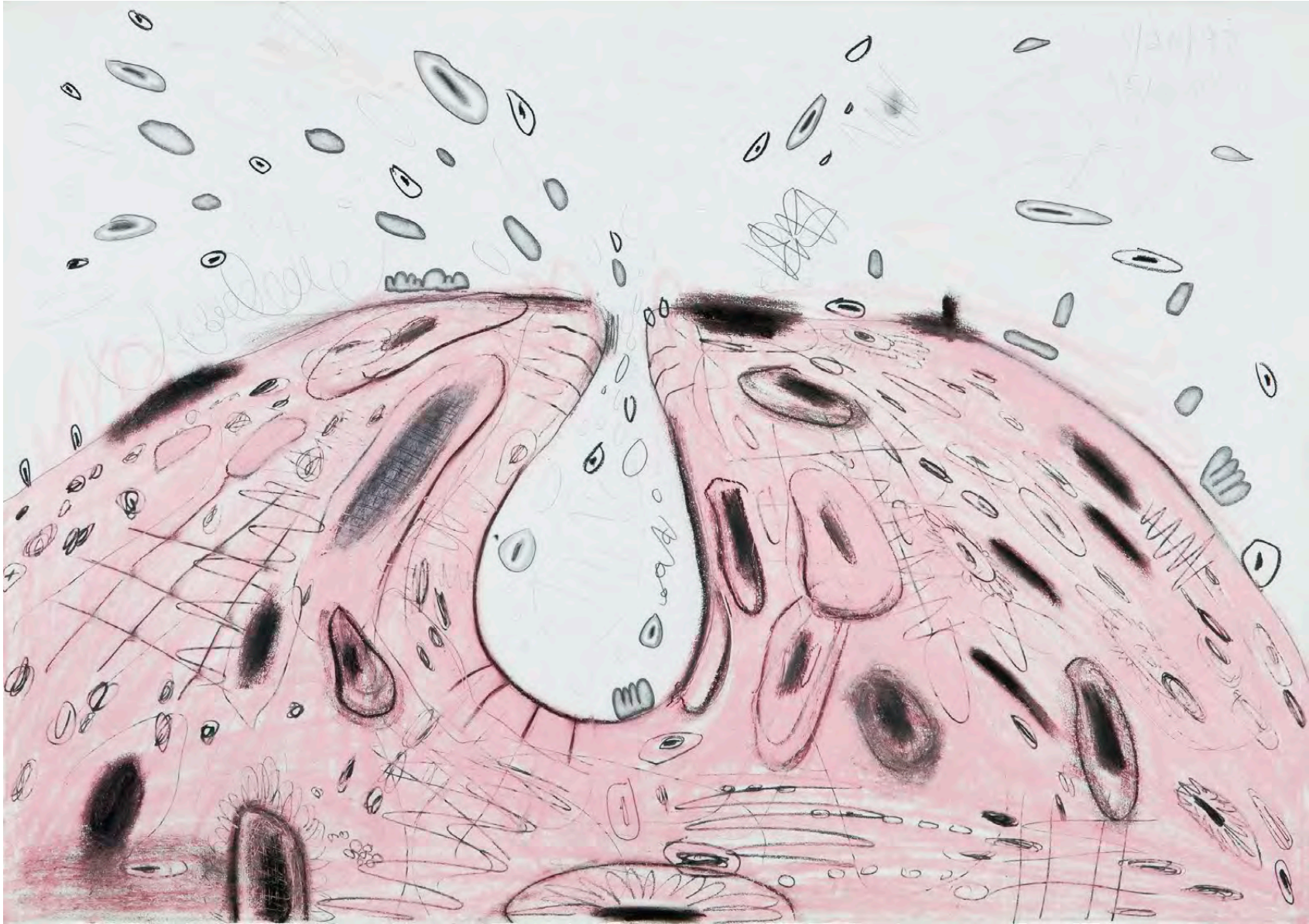
5 1/4 x 7 1/2 in (13.3 x 19.1 cm)

framed: 10 3/8 x 12 1/2 in (26.4 x 31.8 cm)

(FA7414)



WILLIAM COPLEY
Untitled, 1994
ink and graphite on paper
24 x 18 1/2 in (61 x 47 cm)
(WC7394)



CARROLL DUNHAM
Pink Mound with Cavity, 1993
wax crayon and graphite on paper
19 x 28 in (48.3 x 71.1 cm)
(CD7224)





MONA HATOUM

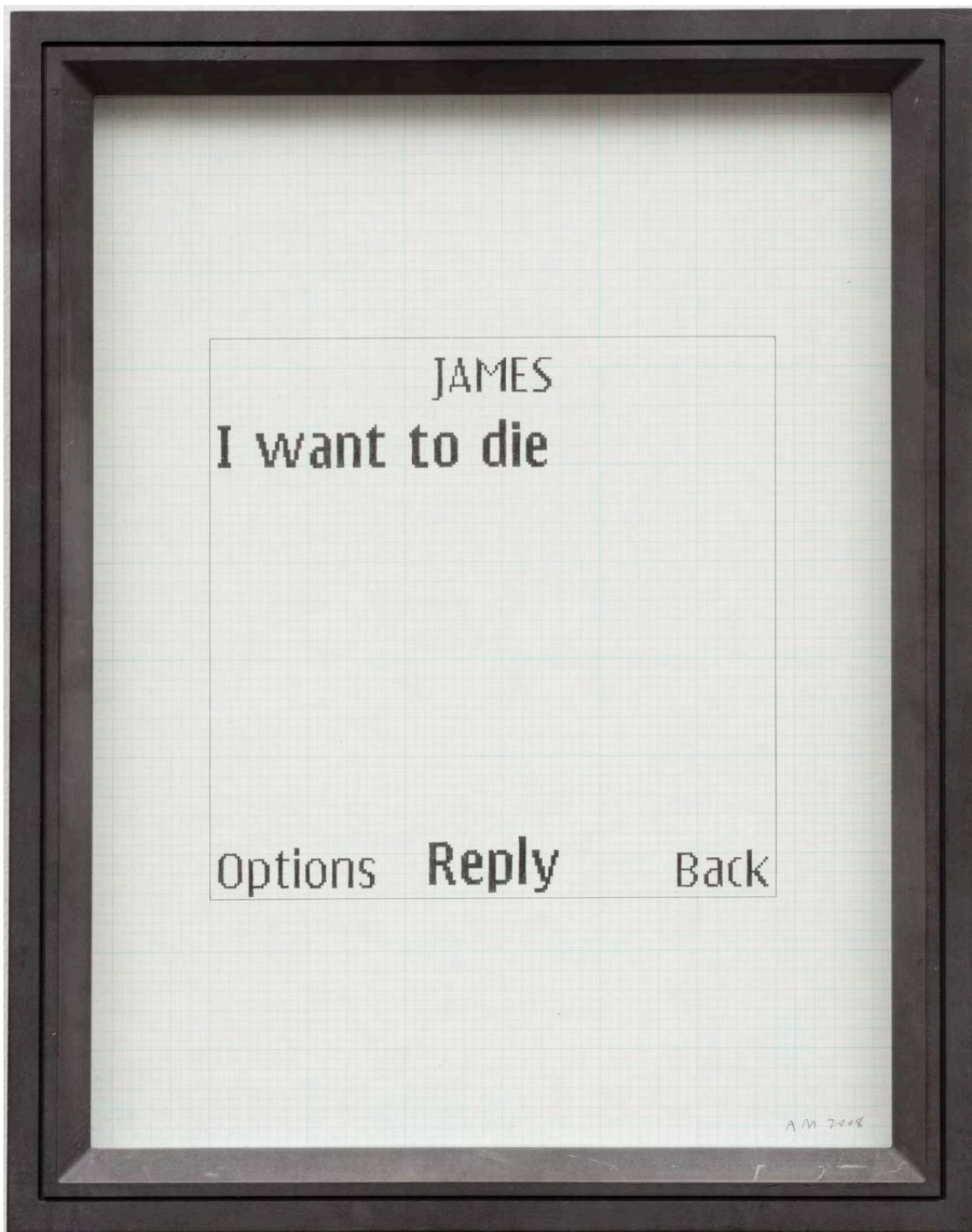
No Way II, 1996

enamel and stainless steel

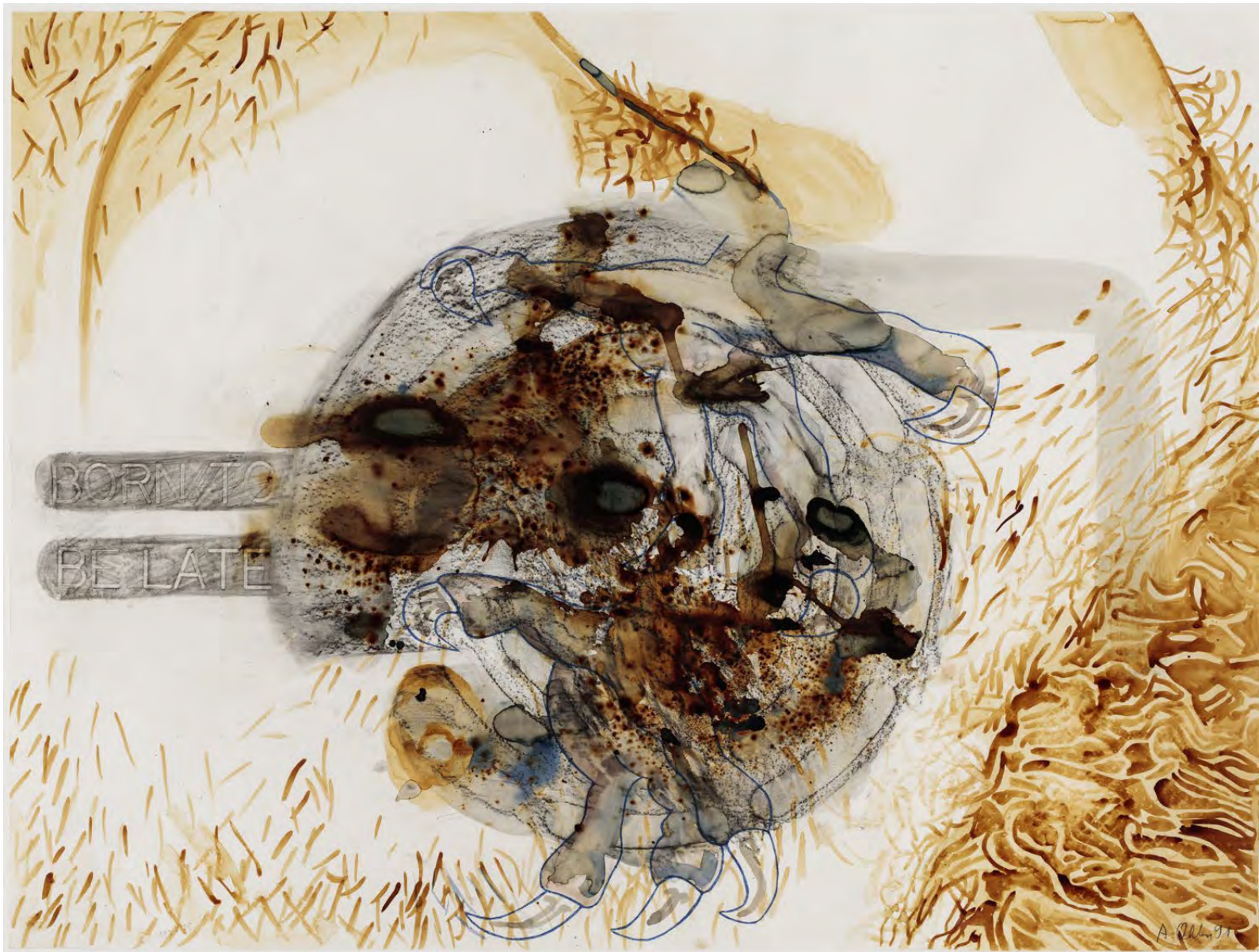
10 3/4 x 8 3/4 x 5 in (27.3 x 22.2 x 12.7 cm)

Edition 2 of 6

(HAT7294)



ADAM MCEWEN
Untitled Text Msg (James), 2008
graphite on graph paper in graphite frame
framed: 12 1/2 x 10 in (31.8 x 25.4 cm)
(AME7418)



ALBERT OEHLLEN
ANTIQUES, 1991
gouache, ballpoint pen, and graphite on paper
30 x 43 3/8 in (76.2 x 110.2 cm)
(A00514)





ALBERT OEHLLEN

Untitled, 2004

cut-and-pasted printed paper on printed paper

16 3/4 x 19 in (42.5 x 48.3 cm)

(A00591)



GABRIEL OROZCO

Untitled, 2001

graphite, powdered pigments, paint, and charcoal on three sheets of paper

each: 5 1/8 x 4 3/8 in (13 x 11.1 cm)

(GO4980)





PETER SAUL

Chinese Businessman Lands on Wall Street, 2006

acrylic on canvas

78 x 96 in (198.1 x 243.8 cm)

(PS0654)



FRANZ WEST

Untitled, 1992

acrylic and photocollage on paper

9 1/2 x 15 3/4 in (24.1 x 40 cm)

framed: 16 1/4 x 22 1/8 in (41.3 x 56.2 cm)

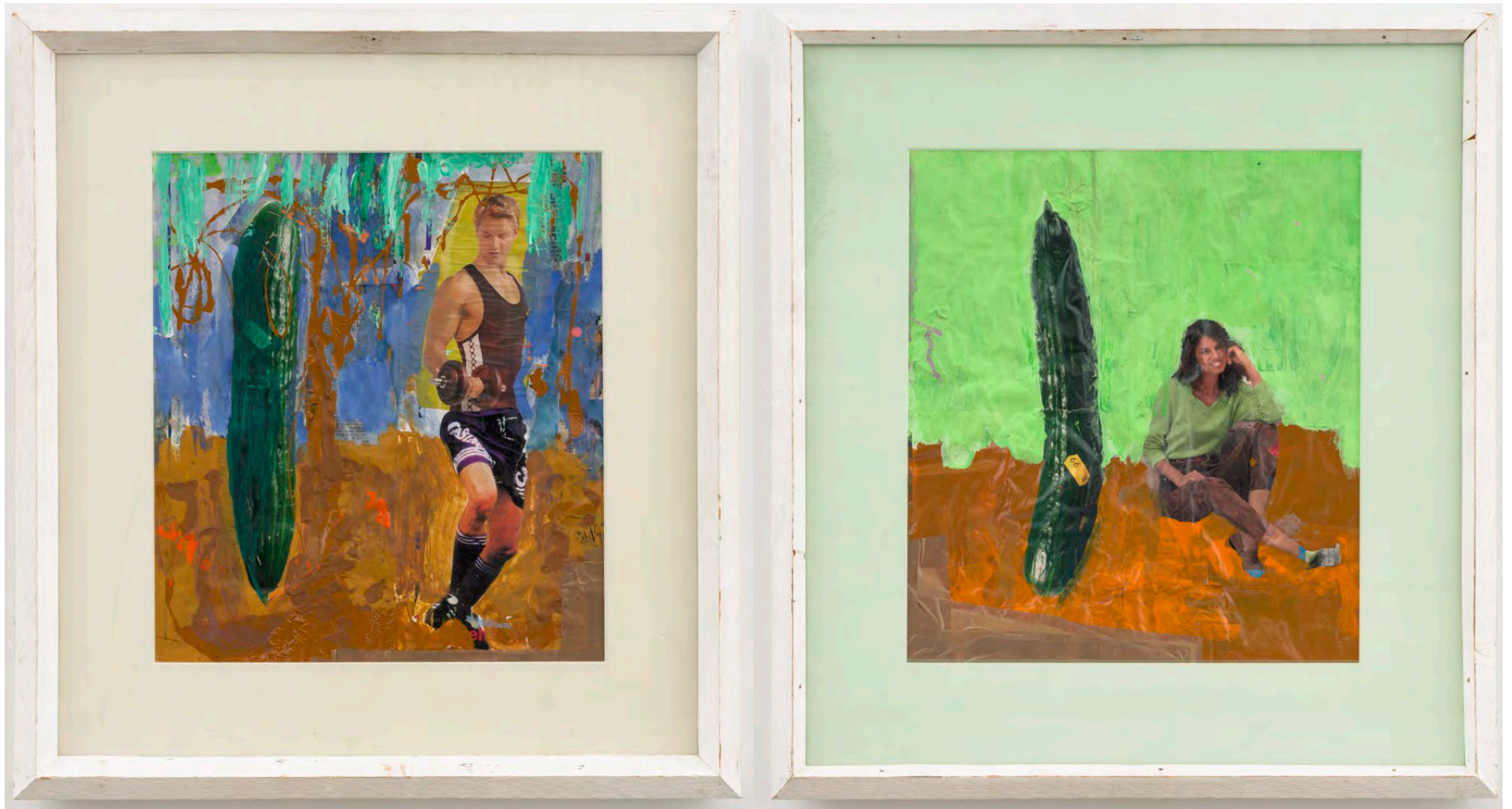
(FW7408)



2

OT

Few 92

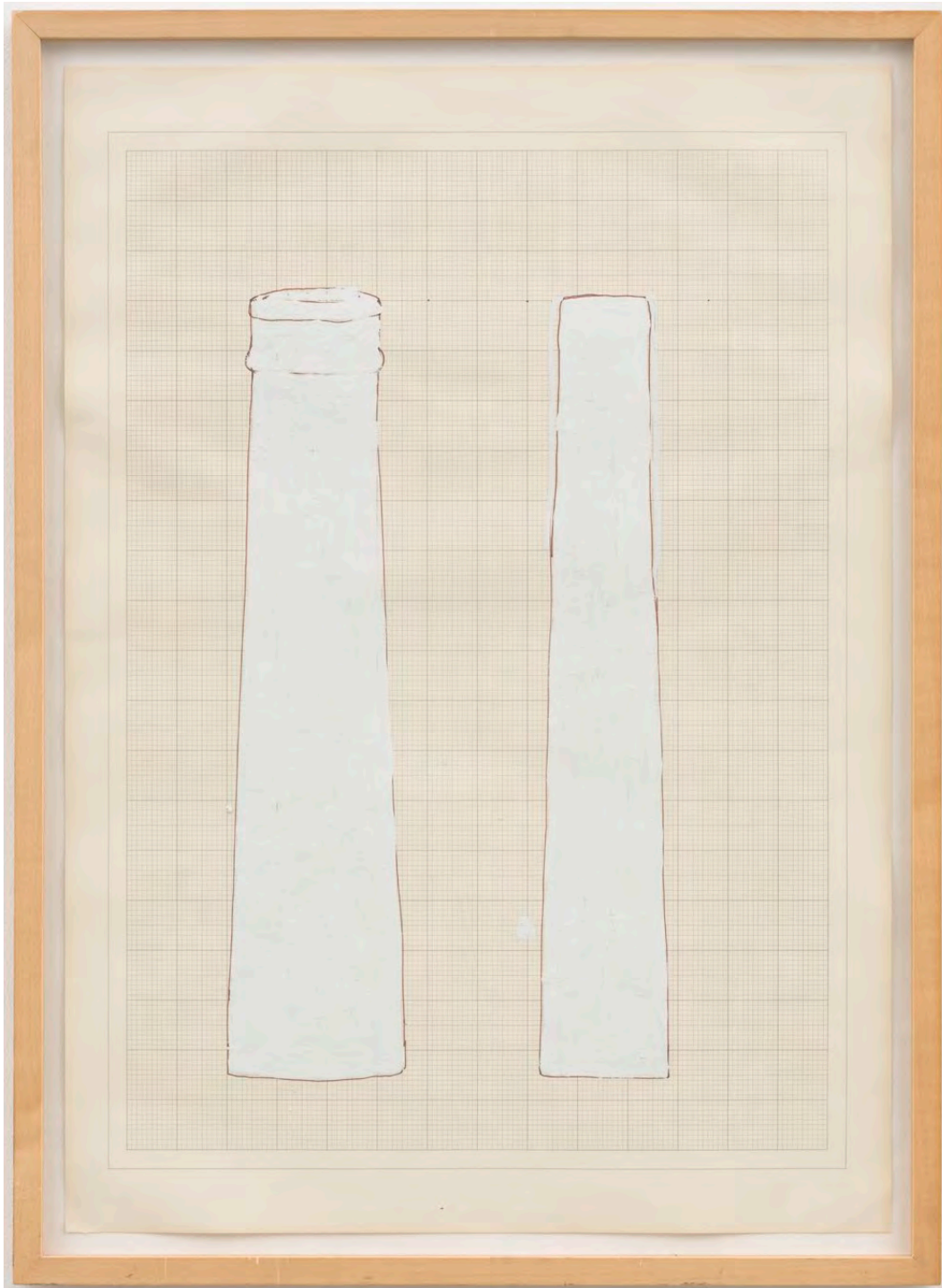


FRANZ WEST

Untitled, c. 1990s

acrylic and photocollage on paper, 2 works on paper in artist two sided frame
framed: 23 1/4 x 21 1/4 in (59.1 x 54 cm)

[FW7410]



RACHEL WHITEREAD

Untitled (Chimney), 1994

ink, crayon and correction fluid on graph paper

18 x 12 in (45.7 x 30.5 cm)

framed: 25 x 18 1/2 in (63.5 x 47 cm)

(RW7406)